



TIVOLI
ILOVIT



SSANGYONG



TIVOLI



EFFICIENT & STYLISH



SPACIOUS & REFINED

Tivoli redefines the standard for interior style and trim for a small crossover. A chunky D-cut steering wheel feels and looks good, the fascia is ergonomic, modern and purposeful.

Both EX and ELX models have leather trim as standard – something not matched by Tivoli's peers. This gives Tivoli an interior usually found in vehicles at twice the price and makes travelling in a Tivoli very special indeed.



Tivoli doesn't scrimp on space either – there is plenty of room for driver and front seat passenger and three adults can travel comfortably in the rear.



EXTERIOR STYLE

A stylish proposition whether on the street or off the road, Tivoli's elegant shape features a swept back 'floating' roofline reminiscent of premium 4x4's.

Finished with details such as projection headlamps, stylish LED positioning lights front and rear, also with LED repeaters on the door mirrors (ELX) Tivoli stands out from the crowd.



AN INTERIOR FULL OF FEATURES



SMART INSTRUMENT CLUSTER

Tivoli ELX features a smart cluster that allows you to change its colour depending on your mood!

There's also a sophisticated trip computer on all Tivolis that shows tyre pressures, distance to empty, distance travelled and outside temperature.





INFOTAINMENT

Tivoli SE comes with a double DIN radio that is Bluetooth and iPod compatible.

A 7" touch screen is a feature of the radio in EX models whilst ELX models also come with full European TomTom navigation.

EX and ELX models are also fitted with a rear view camera.



AIR CONDITIONING

Tivoli SE is equipped with manually controlled air conditioning to keep you cool whatever the weather.

EX and ELX models feature a dual-zone air conditioning system which allows driver and passenger to set individual temperatures – and there's even a memory feature for next time you drive your Tivoli!

TIVOLI STANDARD EXTERIOR/ INTERIOR COMBINATIONS

EX MODELS AND ABOVE COME WITH LEATHER AS STANDARD

						
		Grand White	Silent Silver	Flaming Red	Dandy Blue	Space Black
Paint finish		Solid	Metallic	Solid	Metallic	Metallic
Interior	SE	Grey cloth	Grey cloth	Grey cloth	Grey cloth	Grey cloth
	EX/ELX	Grey leather	Grey leather	Grey leather	Beige leather	Beige leather



SPACE & STORAGE

Tivoli is as practical as it is elegant.

There's room for the essentials of life with a large flexible loadspace that adapts to suit your requirements.

Rear loadspace is amongst the best in class at 423 litres and Tivoli's width and height mean that it can accommodate three golf bags.

LUGGAGE BOARD

The cargo bay comes with a luggage cover for security and a folding removable luggage board that provides an easily loaded flat platform and hides a discreet storage space below.



My TIVOLI

The My Tivoli programme allows a much wider choice of colours, trims and drivetrains than standard. My Tivoli vehicles are built to your order and allow for those special touches – a contrasting roof colour, further exterior colours and red leather seats are well worth a short wait for!

Ask your dealer for further information.



				
	Grand White	Silent Silver	Flaming Red	Dandy Blue
Paint finish	Solid	Metallic	Solid	Metallic
Interior trims available on My Tivoli	Beige leather	Beige leather	Beige leather	Grey leather

			
	Space Black	Techno Grey	Jazz Brown
Paint finish	Metallic	Metallic	Metallic
Interior trims available on My Tivoli	Grey leather	Beige leather or Grey leather	Beige leather or Grey leather

STYLING PACKS† (ELX ONLY)

- Black includes: Black 18" diamond cut alloys and black roof, spoiler and body colour door mirrors (Grand White, Silent Silver, Flaming Red).
- White includes: Gun metal 18" diamond cut alloys and white roof, spoiler and door mirrors (Dandy Blue, Space Black).

† Not available with Techno Grey or Jazz Brown paint finishes.



ADDITIONAL ENGINE OPTIONS (EX ONLY)

-
- EX diesel auto 2WD
 - EX diesel 4x4
-

RED LEATHER PACK (ELX ONLY)

-
- Red leather seats
 - Red trimmed fascia
 - Red trimmed floor mats
 - Interior mood lighting
-



TECHNICAL

A choice of ultra-modern petrol or diesel 1.6 litre engines, 6 speed manual or Aisin 6 speed automatic transmissions and Torque on Demand 4x4 available on EX and ELX diesels means that there's a Tivoli for every requirement.



1.6 LITRE PETROL

- 1597cc
 - 128PS @ 6,000 rpm
 - 160Nm @ 4,600 rpm
 - Combined mpg: 44.1 (manual), 39.2 (auto)
 - CO2: 149 (manual), 167 (auto)
-



1.6 LITRE DIESEL

- 1597cc
 - 115PS @ 3,400 rpm
 - 300Nm @ 1,500 rpm
 - 2WD combined mpg: 65.7 (manual), 51.4 (auto)
 - 4x4 combined mpg: 60.1 (manual), 47.9 (auto)
 - CO2 (4x2): 113 (manual), 146 (auto)
-

TRANSMISSIONS

Tivoli has a choice of two modern and efficient 6 speed gearboxes – manual and automatic. Matched with our new 1.6 litre petrol and diesel engines which complement your driving style with smooth shifts and well-chosen gear ratios.

The automatic gearbox is sourced from Japanese supplier Aisin and is equipped with three alternative shift strategies – eco, power and winter to suit your driving needs.



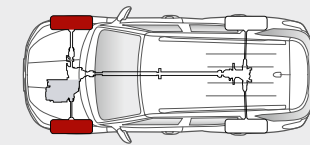
TORQUE-ON-DEMAND 4X4



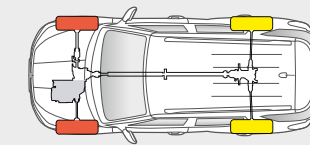
Tivoli features an advanced 4x4 system that operates in two modes depending on conditions and settings.

In auto mode and normal conditions, Tivoli remains in two wheel drive to optimise fuel efficiency. When sensors detect a potential loss of grip, the system progressively engages the four wheel drive mode.

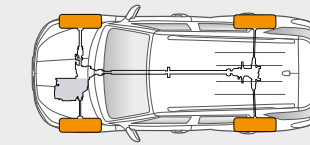
For very loose or slippery surfaces, the 4x4 system can be locked to allocate drive equally between front and rear wheels. This provides supreme grip and control for low-speed manoeuvres.



Mostly 2WD



4WD for better stability



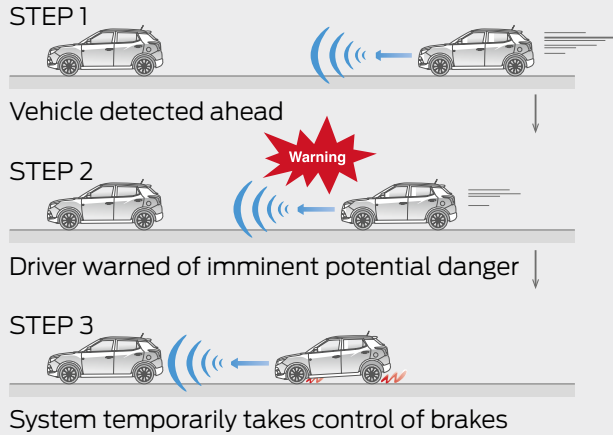
50:50 torque distribution(4WD lock)

AISIN 6 SPEED GEARBOX



SMART SAFETY*

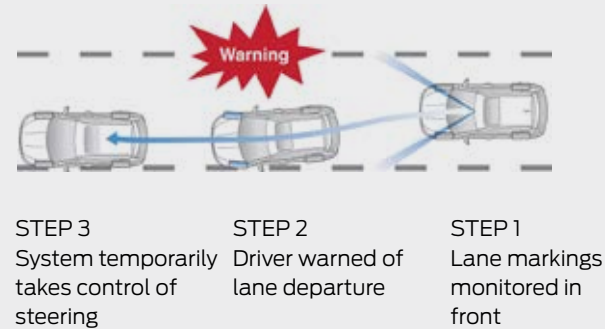
FORWARD COLLISION WARNING AND AUTONOMOUS EMERGENCY BRAKING



Evaluating data from the vehicle's on board camera, Forward Collision Warning (FCW) can detect a potential collision with a vehicle, pedestrian or obstacle. If a collision appears imminent FCW will warn the driver, and if there is insufficient response Autonomous Emergency Braking (AEB) will intervene with appropriate braking force to stop the vehicle or minimise damage.

*EX model features FCW and AEB. ELX model features FCW, AEB and Safety Pack comprising LDW, LKA, HBA and TSR

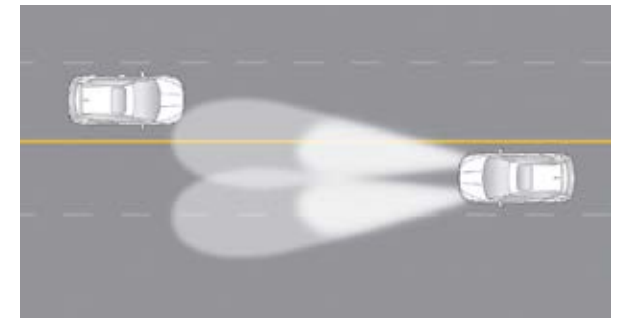
LANE DEPARTURE WARNING AND LANE KEEPING ASSIST



Lane Departure Warning (LDW) is designed to alert the driver that the vehicle is about to deviate from a traffic lane. Lane Keeping Assist (LKA) then helps the car stay toward the centre of the lane by applying a small amount of counter-steering force.



TRAFFIC SIGN RECOGNITION
 The TSR system recognises speed limit signs and provides the driver with an on-screen warning.



HIGH BEAM ASSIST
 HBA detects oncoming vehicles and the rear lights of vehicles in front and dips headlamp high beams accordingly.

PASSIVE SAFETY

AIRBAGS

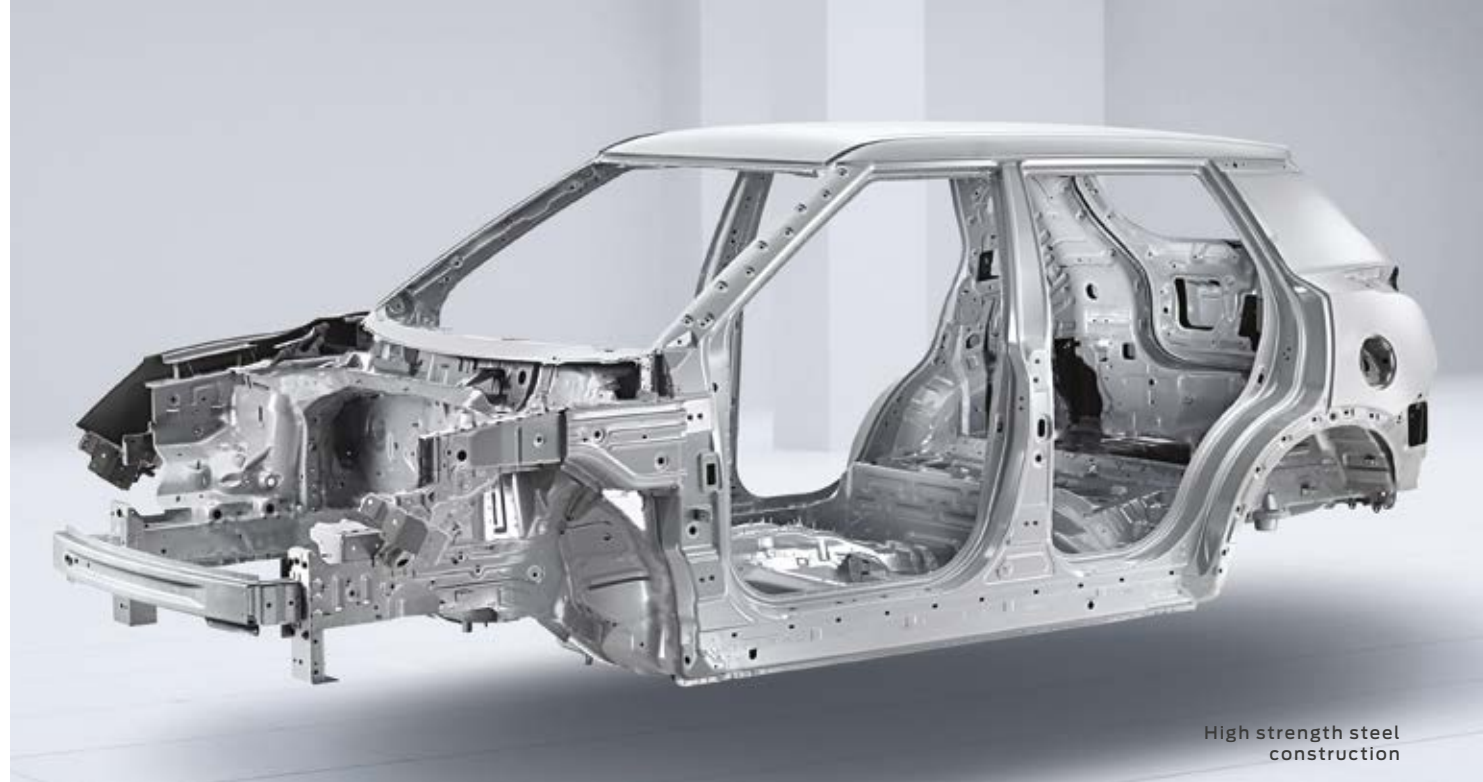
Tivoli is equipped with 7 airbags for maximum passenger protection on impact – the most in its class. These include a driver's knee protection airbag – a feature normally found in prestige vehicles.

ISOFIX

Tivoli is equipped with ISOFIX child seat mountings to the rear outer seats to allow a firm and rigid attachment of child seats.

STRENGTH

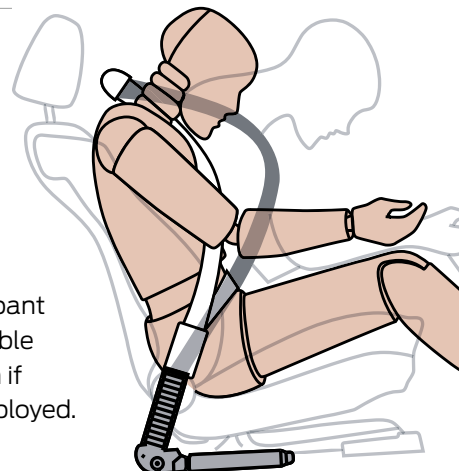
The basis of a vehicle's safety is its monocoque structure – both how it's made and how it responds on impact. SsangYong's engineers have made extensive use of high strength steel to construct a rigid passenger cell.



High strength steel construction

SEAT BELT PRE-TENSIONERS

In the event of a collision, the pre-tensioner immediately tightens the seatbelt over the chest and lap, ensuring the occupant is in the best possible restrained position if the airbags are deployed.



NCAP 4 STAR RATED



EX and ELX models.



ACTIVE SAFETY

Tivoli is equipped with the latest technology to assist the driver to avoid accidents.

TPMS



Tivoli has tyre pressure monitoring built into its electronics. Monitored through the trip computer each tyre is continually checked for pressure with the driver immediately warned of unsafe pressures.

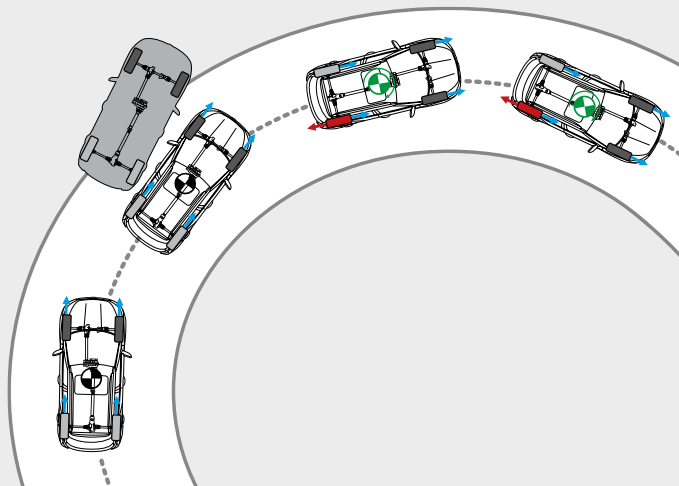
EBD — ABS

ELECTRONIC BRAKEFORCE DISTRIBUTION
ANTI-LOCK BRAKE SYSTEM

Brake force is distributed appropriately to the front and rear wheels according to the vehicular load of persons and/or cargo.

BAS BRAKE ASSIST SYSTEM

This electronically controlled system automatically initiates full braking in an emergency to reduce the vehicle's braking distance and to help avoid an accident.



ESP

ELECTRONIC STABILITY PROGRAMME

The electronic stability programme monitors road conditions and vehicular status constantly, adjusting engine output and braking whenever the driver is about to lose control. The ESP integrates the anti-lock brake system, active rollover protection, anti-slip regulation and brake-force assist to improve Tivoli's intervention capabilities.

FINISHING TOUCHES





REMOTE AUDIO/ PHONE & CRUISE CONTROLS

To maximise efficiency, all Tivolis are equipped with electronic cruise control. The steering wheel mounted controls allow the driver to maintain a set speed without having to keep a foot on the accelerator.

The steering wheel has controls at your fingertips. The radio unit and your phone are controlled on the left whilst the electronic cruise control is on the right.

SMART STEERING

Allows you to match steering effort to your driving style – switch between comfort, normal and sport modes as the mood takes you!



SMART KEY SYSTEM

Tivoli ELX features a push button starting system which allows the car to be started without taking the key from your pocket or bag.



PARKING SENSORS

EX models are fitted with a rear view camera, whilst ELX models are also fitted with front and rear parking sensors that detect obstacles and alert the driver of their presence.

EQUIPMENT

✔ Standard ✘ Not Available

	TIVOLI SE	TIVOLI EX	TIVOLI ELX
Comfort			
Height adjustable driver's seat	✔	✔	✔
Deluxe fabric seats	✔	✘	✘
Leather seats	✘	✔	✔
Front seat warmers	✘	✔	✔
Chrome interior door handles	✘	✔	✔
Stainless steel front door kick plates	✘	✔	✔
D-cut steering wheel	✔	✘	✘
Leather covered D-cut steering wheel & gear knob	✘	✔	✔
Tinted glass	✔	✔	✔
Privacy glass: rear door, quarter & tailgate	✘	✘	✔
Convenience			
Remote keyless entry	✔	✔	✘
Smart keyless start	✘	✘	✔
Stop & start system (petrol manual only)	✔	✔	✔
Smart instrument cluster - six colour options	✘	✘	✔
Trip computer with outside temperature gauge	✔	✔	✔
Electric windows (front & rear)	✔	✔	✔
Automatic headlamps	✘	✘	✔
Rain sensing wipers	✘	✘	✔
Automatic dipping rear view mirror	✘	✘	✔
Smart steering	✔	✔	✔
Height adjustable steering wheel	✔	✘	✘
Height and reach adjustable steering wheel	✘	✔	✔
Electronic cruise control	✔	✔	✔
Headlight levelling system	✔	✔	✔
Automatic power folding door mirrors	✘	✘	✔
Electrically operated & heated door mirrors	✔	✔	✔
60/40 split rear seats	✔	✔	✔
Luggage cover	✘	✔	✔
Removable luggage board	✔	✔	✔
Climate and heating			
Manual air conditioning	✔	✘	✘
Dual-zone automatic air conditioning	✘	✔	✔
In car entertainment			
RDS Radio with iPod & Bluetooth connectivity	✔	✘	✘
7" touchscreen RDS radio with iPod & Bluetooth connectivity	✘	✔	✘
7" touchscreen RDS radio with iPod & Bluetooth connectivity, TomTom navigation	✘	✘	✔
Rear view camera	✘	✔	✔
Steering wheel mounted audio controls	✔	✔	✔
Six speakers including two tweeters	✔	✔	✔
Roof mounted antenna	✔	✔	✔

	TIVOLI SE	TIVOLI EX	TIVOLI ELX
Safety and security			
Dual front airbags with passenger off switch	✓	✓	✓
Side airbags	✓	✓	✓
Curtain airbags	✓	✓	✓
Driver's knee airbag	✓	✓	✓
Two stage front seatbelt pre-tensioners	✓	✓	✓
Electronic Stability Programme (ESP)	✓	✓	✓
Active Rollover Protection (ARP)	✓	✓	✓
ABS with Electronic Brakeforce Distribution (EBD)	✓	✓	✓
Forward Collision Warning (FCW)	x	✓	✓
Autonomous Emergency Braking (AEB)	x	✓	✓
Lane Departure Warning (LDW)	x	x	✓
Lane Keeping Assist (LKA)	x	x	✓
Traffic Sign Recognition (TSR)	x	x	✓
High Beam Assist (HBA)	x	x	✓
ISOFIX fittings to outer rear seats	✓	✓	✓
Automatic speed sensing door locks	✓	✓	✓
Alarm & immobiliser	✓	✓	✓
Exterior			
Piano black radiator grille	✓	✓	✓
Projection headlamps	✓	✓	✓
Front & rear LED daytime running lights	✓	✓	✓
Rear spoiler with LED stop lamp	x	x	✓
Front fog lights	x	✓	✓
16" alloy wheels	✓	x	x
18" alloy wheels	x	✓	x
18" diamond cut gun metal alloy wheels	x	x	✓
Mini spare	✓	✓	✓
Tyre pressure monitoring system	✓	✓	✓
Front and rear parking sensors	x	x	✓

ALLOY WHEELS



SE
16"



EX
18"



ELX
18" DIAMOND CUT
GUN METAL



ELX
18" DIAMOND CUT
BLACK

TECHNICAL SPECIFICATIONS

	TIVOLI PETROL MANUAL	TIVOLI PETROL AUTOMATIC	TIVOLI DIESEL MANUAL	TIVOLI DIESEL AUTOMATIC	TIVOLI DIESEL MANUAL 4X4	TIVOLI DIESEL AUTOMATIC 4X4
Engine and drivetrain						
Drivetrain	Front wheel drive				Torque on demand 4x4	
Engine capacity (cc)	1597					
Engine configuration	4 cylinders					
Emission standard	Euro VI					
Transmission	6 speed manual					
Fuel	Petrol			Diesel		
Exhaust system	Catalyst					
Performance						
Top speed (mph)	106	99	109	107	109	107
0-62mph (sec)	12	11	12	12	12	12
Maximum power (PS/rpm)	128 / 6000			115 / 3400-4000		
Maximum torque (Nm/rpm)	160 / 4600			300 / 1500-2500		
Max unbraked trailer load (kg)	500					
Max braked trailer load (kg)	1000			1500		
Towbar max load (kg)	60			80		
Economy & emissions						
Fuel consumption: combined mpg	44.1	39.2	65.7	51.4	60.1	47.9
Fuel consumption: urban mpg	34.5	28.8	55.3	38.2	51.4	36.2
Fuel consumption: extra urban mpg	52.3	49.6	72.4	62.8	67.3	57.7
CO2 emissions (g/km)	149	167	113	146	123	156
Dimensions						
Length (mm)	4195					
Width (mm)	1795					
Height (mm)	1590					
Wheelbase (mm)	2600					
Track: front/rear (mm)	1555					
Min turning radius (m)	5.3					
Overhang: front/rear (mm)	860 / 735					
Gross vehicle weight (kg)	1810			1920		
Kerb weight (kg)	1270	1300	1430	1465	1430*	1465*
Approach angle (deg)	20.5					
Departure angle (deg)	28.0					
Ramp angle (deg)	17.0					
Luggage space: seats upright (litres)	423L					
Fuel tank capacity (litres)	47L					
Running gear						
Steering	Electric power assisted rack and pinion					
Suspension (front/rear)	MacPherson strut/independent				MacPherson strut/multi-link	
Brakes (front/rear)	Vented disc/solid disc					
	SE		EX		ELX	
Tyres	205/60 R16		215/45 R18		215/45 R18	

*Provisional data

DIMENSIONS



1795mm



860mm | 2600mm | 735mm
4195mm



1555mm

1590mm



INSURANCE

Model	PETROL 2WD					DIESEL 2WD/4X4				
	SE	EX MAN	EX AUTO	EX MAN	EX AUTO	SE	EX MAN	EX AUTO	ELX MAN	ELX AUTO
Insurance group	16D	13D	13D	13D	13D	17D	14D	14D	15D	15D

WARRANTY

Our limitless mileage warranty really is best in class. All SsangYong vehicles are covered by a 5 year limitless mileage warranty.



SSANGYONG
Est. Korea 1954
5 YEAR WARRANTY



For more information please call 0333 444 1954

The information in this brochure is not binding and is subject to alteration. SsangYong reserves the right to change specifications at any time without notice. The colour and finishes reproduced in this brochure are subject to the limitations of the printing process and may vary from the actual colour and paint finish. This brochure does not constitute an offer of sale of any particular vehicle or specification. Please confirm exact specifications, prices and colour availability with your SsangYong dealer or check the SsangYong website.

2017TIV



SSANGYONG

Est. Korea 1954

5 YEAR WARRANTY